

Ahlin Yaung: Improving Access to Renewable Energy in Rural Myanmar

UNDESA Seminar on Ensuring Access to Affordable, Reliable,
Sustainable and Modern Energy for All (SDG 7)

Addis Ababa

Matthew Tiedemann

Pact Myanmar

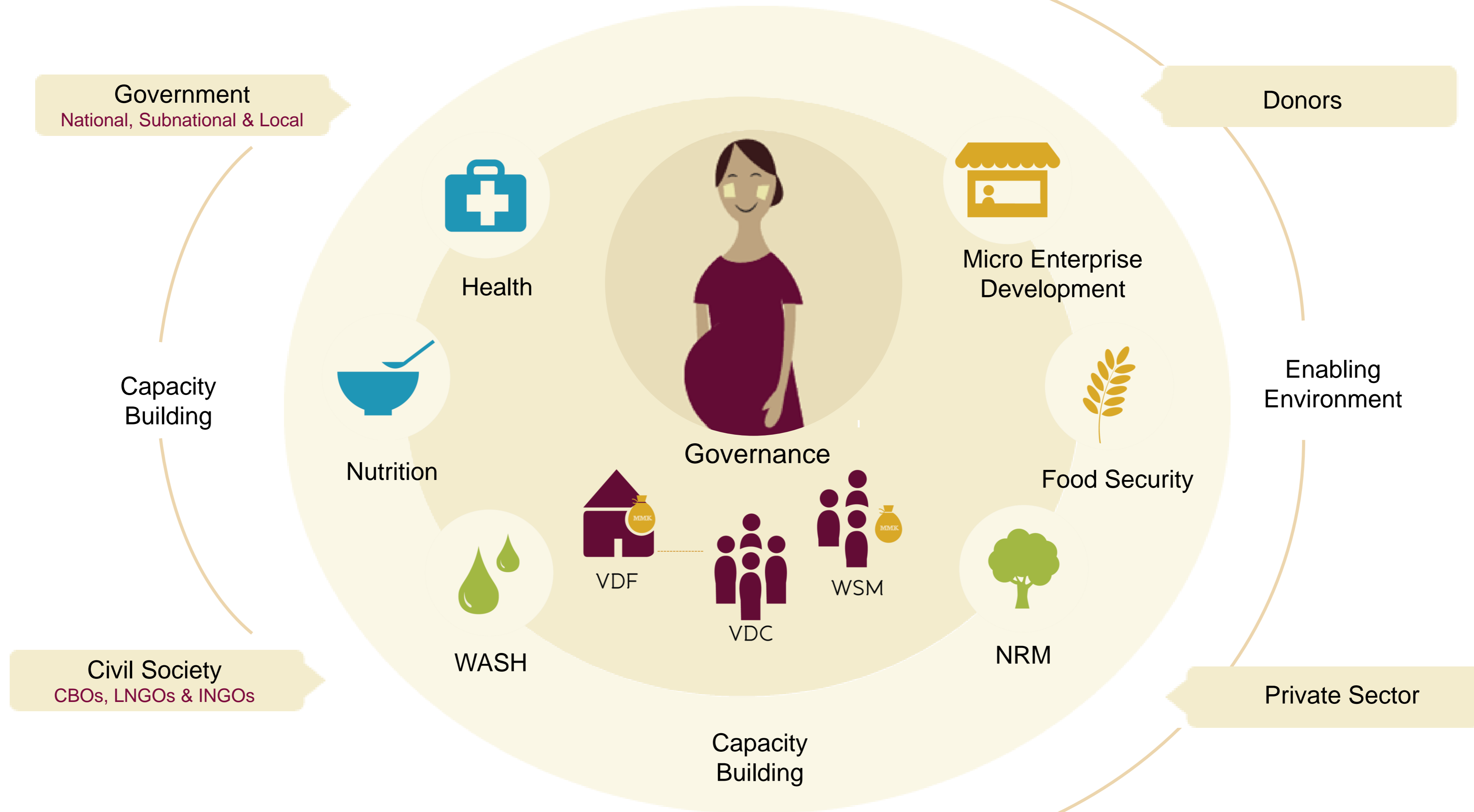
1 July 2016



building
local promise.



Pact's Integrated Approach



VDF: Village Development Fund



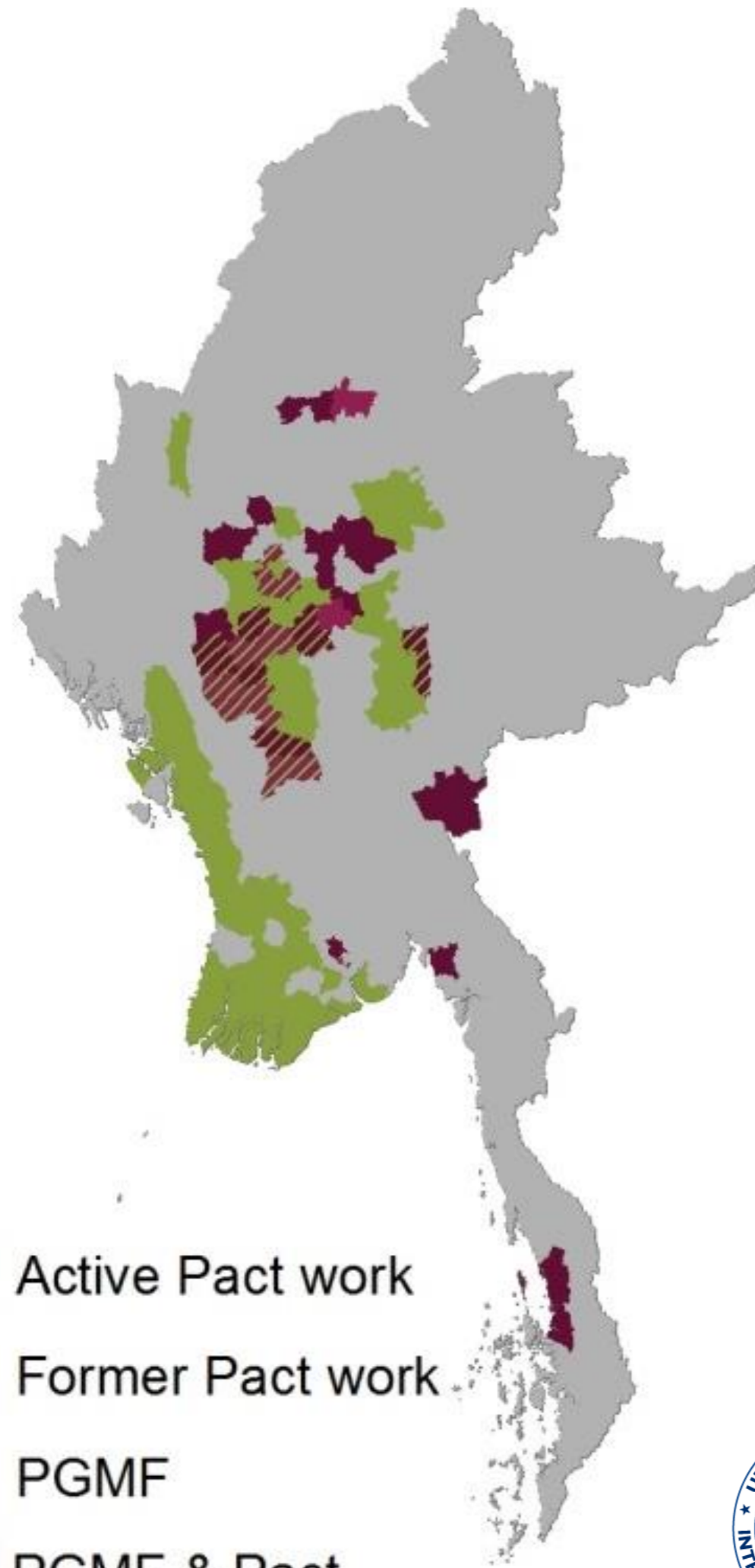
VDC: Village Development Committee



WSM: Women's Savings Led Microfinance



Pact's Presence in Myanmar



- Operating in Myanmar since 1997
- National Microfinance portfolio
- Integrated Development portfolio
- Impacting over 5 million citizens in over 11,000 villages



Energy Access in Myanmar

- 32% have access to grid; 15% in rural areas
- 40,000+ villages w/o grid
- Biomass = 70% of primary energy
- 61% earn <\$2/day

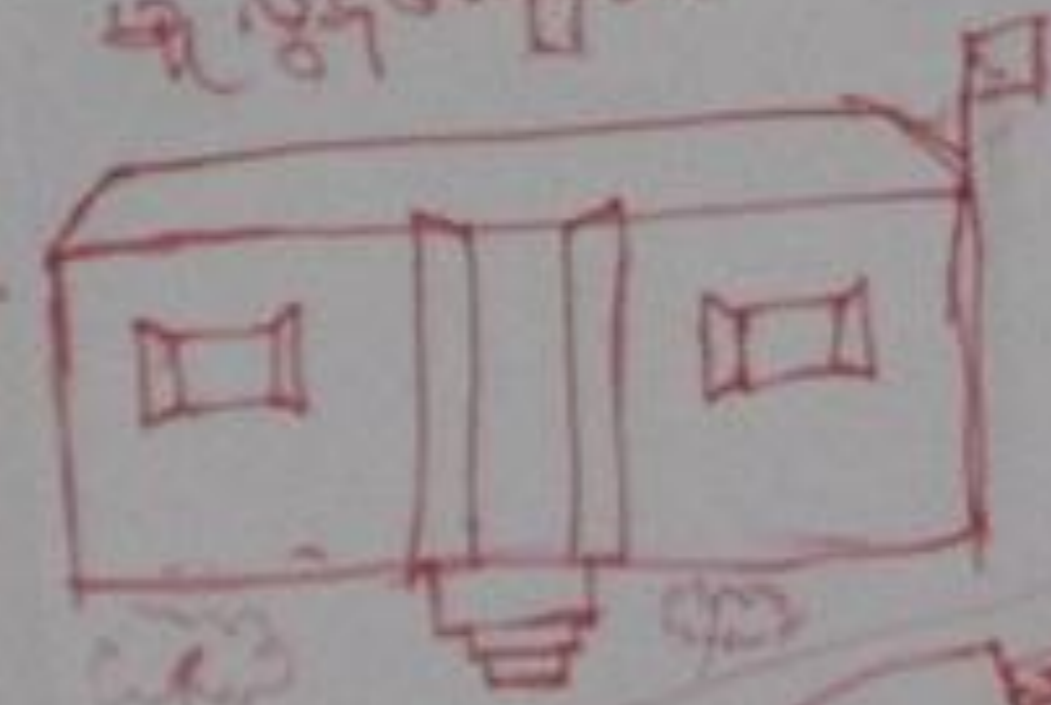


ဆွေးနွေး

မူကြို ကျောင်း



မူလွန်ကျောင်း



မူကြို မြို့ကျေးလက်

ကျေးရွာအောင်မြင်မှာ
ကျေးရွာဖွံ့ဖြိုးတိုးတက်

မိမိတို့

မိခင်ဘဝ

သနားစရာ

မိခင်

ရရှိနိုင်ကြောင်း

ဆွေးနွေး

ရေ

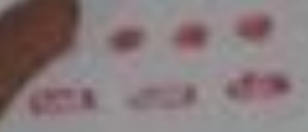
စာပို့ဆက်ရေး



အိမ်ထောင်ရေး



အိမ်ထောင်ရေး-ကျေးလက်



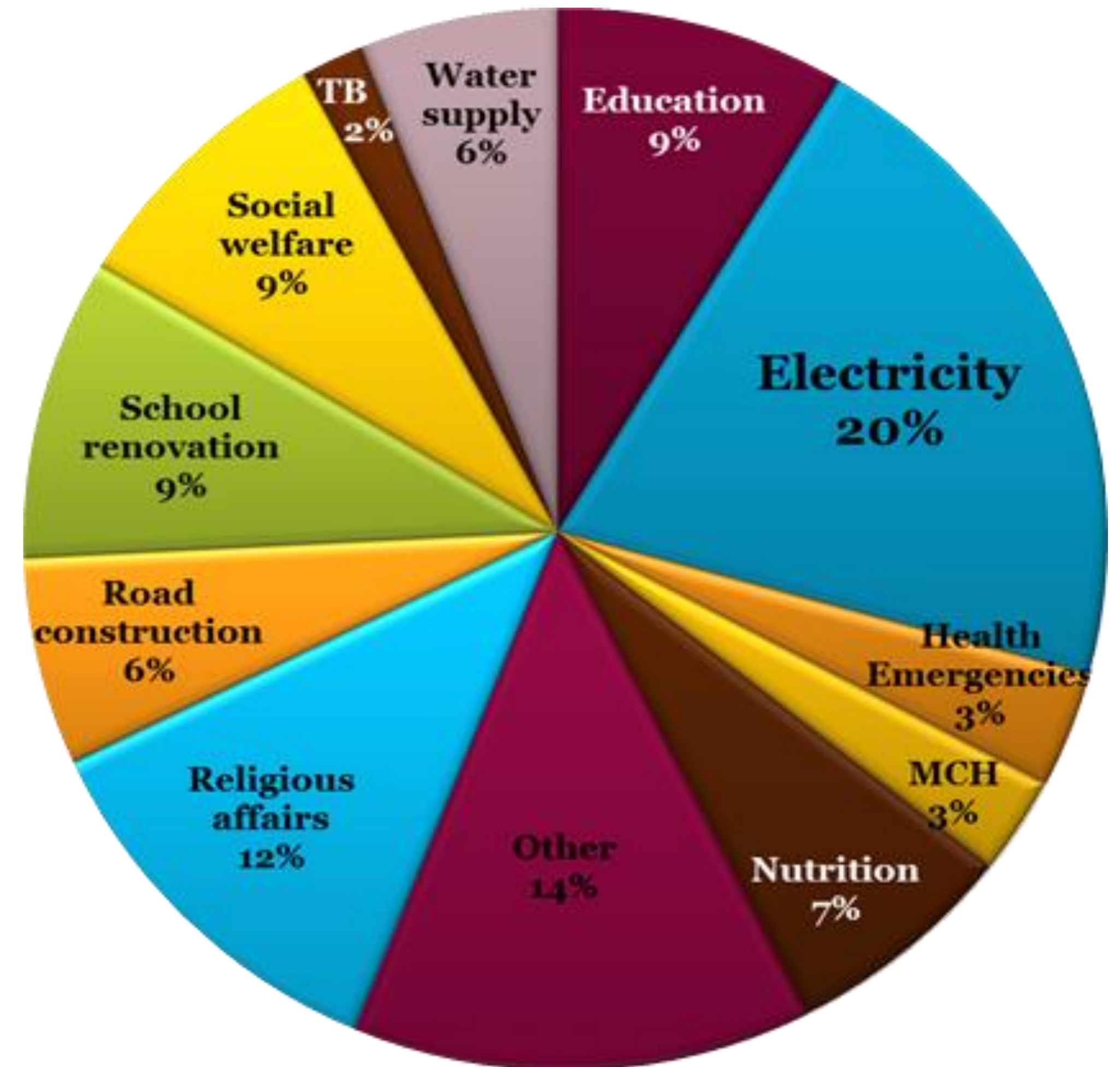
အိမ်ထောင်ရေး-ကျေးလက်

Sustainable Access to Funds

- 60,000 empowered women with \$2.5 M in Village Savings & Loan funds - “WORTH”
- 1,400 Village Development Funds worth \$1.3M

Communities’ top development priority – electrification

=> Diesel generators

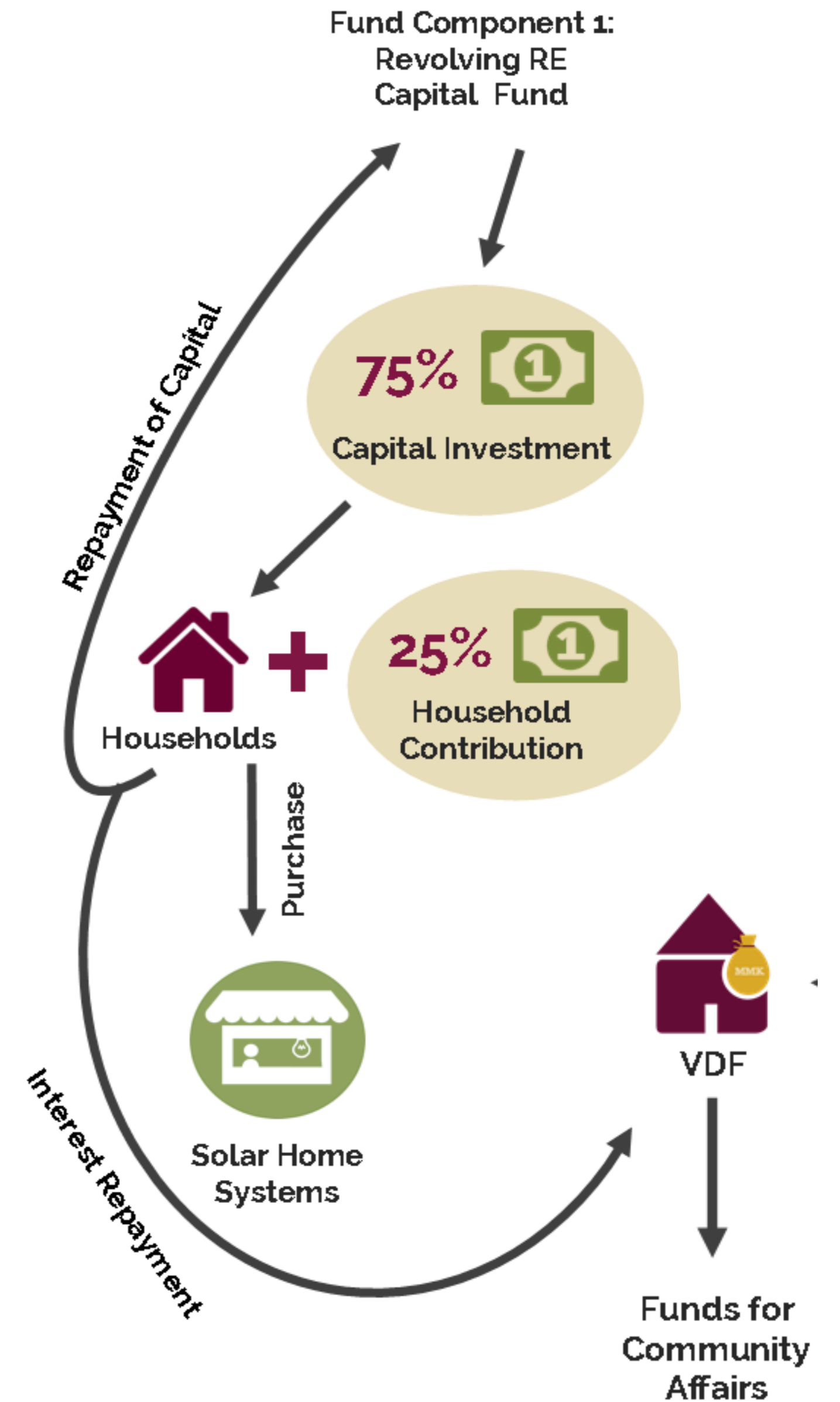


Village Development Fund grant disbursements

Target communities: 100,000 people in Pact villages with functioning VDCs/VDFs in Dry Zone

Approach:

- Revolving capital financing for hire-purchase of solar home systems.
- 9-month repayment period
- Households access low-interest financing for 75% of the initial capital.
- To encourage ownership, the remaining 25% is financed through personal savings or loans from the VDF.



RE Results to Date

- Present in **308 villages** across 5 townships
- **99,300** people have improved access to electricity
- **35,600 individuals** trained to bring improved RE knowledge to communities
- **200,000** people by 2017





Challenges, Adaptation

- The grid is coming
- Inexpensive, low-quality products
- Market disturbances
- Lack of familiarity with solar energy
- Lack of access to capital
- Policy: government rural electrification policies/programs

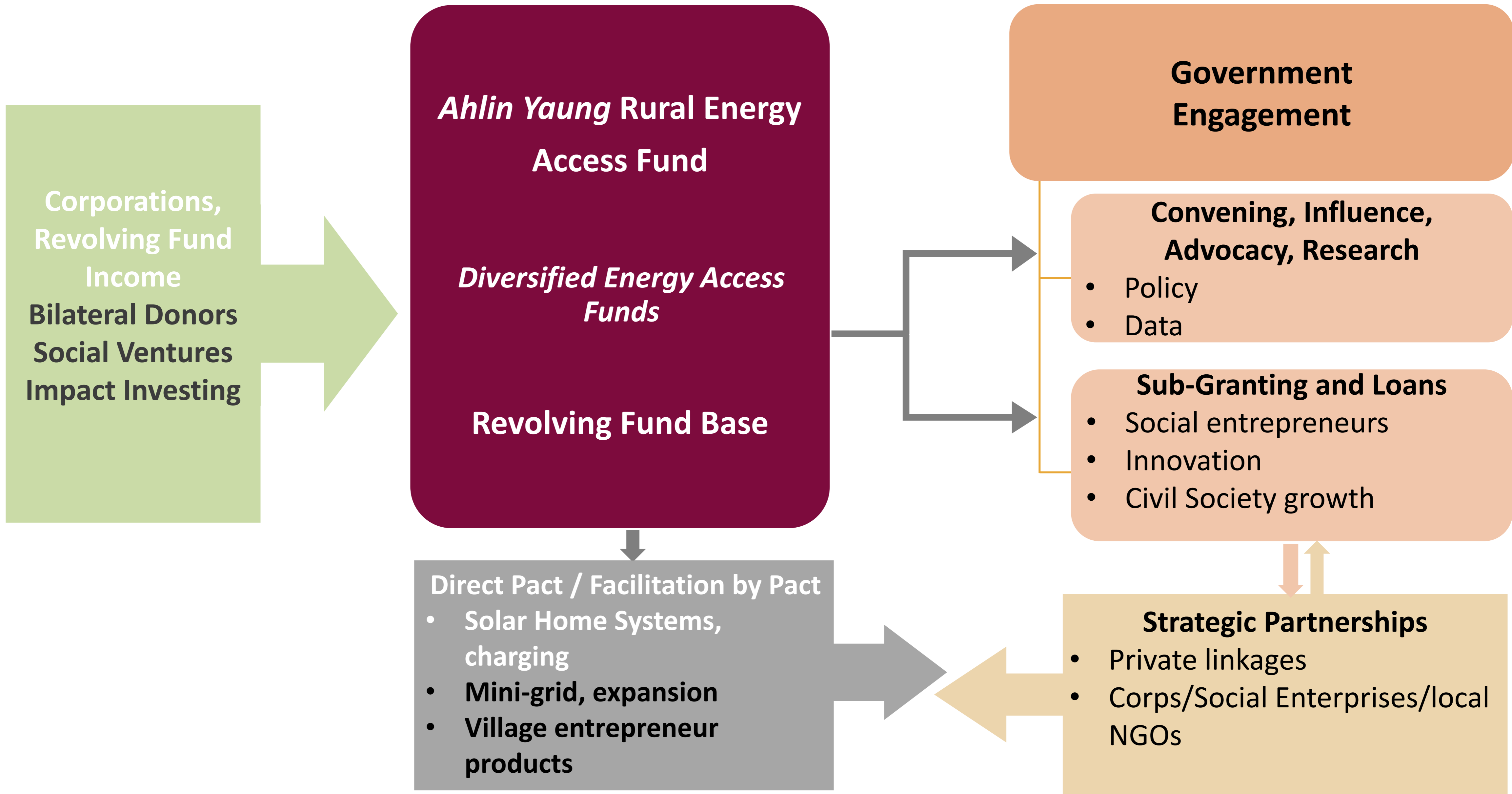




Pact's Comparative Advantages:

- Links to & trust in 1000s of villages
- Understanding consumer needs
- Lasting community management structures = sustainability
- Financial access mechanisms







A woman with dark hair, a pink paperclip, and a green polka-dot shirt is smiling in front of solar panels. A yellow text box is overlaid on the left side of the image.

Powering the future
she wants